

La notte bella

for medium voice, violin, cello and piano

music by John Plant

poem by Giuseppe Ungaretti

for my father

La notte bella

Devetachi 11 24 agosto 1916

Quale canto s'è levato stanotte
che intesse
di cristallina eco del cuore
le stelle

Quale festa sorgiva
di cuore a nozze

Sono stato
uno stagno di buio

Ora mordo
come un bambino la mamella
lo spazio

Ora sono ubriaco
d'universo
-Giuseppe Ungaretti

The beautiful night

Devetachi, August 24, 1916

What song arose tonight
weaving a tapestry
of stars
from the crystal echo of the heart

What upwelling feast
of a heart at wedding

I have been
a pool of stagnant darkness

Now I bite
into space
like a baby his mother's breast

Now I am drunk
on universe
-Translation: John Plant

La belle nuit

Devetachi, 24 août 1916

Quel chant s'est élevé cette nuit
qui a tissé de l'écho cristallin du coeur
les étoiles

Quelle fête surgissante
d'un coeur en noces

J'ai été
un étang de ténèbres

Maintenant je mords
comme un bambin la mamelle
l'espace

Maintenant je suis ivre
d'univers
- Traduction: Jocelyne Fleury

This poem is set to music by kind permission of
Signora Annamaria Ungaretti Lafragola and Arnoldo Mondadori Editore.

Lento $\text{♩} = 60-63$

Piano *p cristallino*

Piano

8va

Leo. →

10 Violin

V.

pp *mp*

Piano

10

Più animato $\text{♩} = 80$

V. *mf* *mp*

Vc. *mf*

Piano *13 mp* *p*

con Leo.

17

V.

Vc.

Piano

17

p *mf*

22

V.

Vc.

Piano

22

p *mp*

3 6 5 5

26

V.

Vc.

Piano

26

p *pp*

5

V. *pp* *pochissimo!* *dolce*

Vc. *pp* *pochissimo!*

Piano *pp* *pochissimo!*

Voice *mf*
Qua - le

V. *ppp* *f*

Vc. *non troppo* *fp* *f*

Piano *molto* *f*

34

Voice
can - to s'è le - va - to sta - not - te?

V. *pp* *ppp* *p*

Vc. *pp* *mp*

Piano *p*

38

con Sord.

V. 44 *tr*

Vc.

Piano 44 *tr*

Voice 49 *poco rit.* ----- *a tempo* *mp dolce*

V. *p* ----- *mp* *p* ----- *pp* *che in -*

Vc. *p* ----- *pp*

Piano 49 *poco rit.* ----- *a tempo* *pp*

Voice 53 *p* *3*

tes - - se di cris - tal - li - - - na e - co del

V. *tr*

Vc.

Piano 53 *pp*

57

Voice

cuo - - - re

V.

dolcissimo

Vc.

Piano

62

Voice

stel - - - - - le

V.

sempre *pp*

Vc.

sempre *pp*

Piano

67

V.

mp

pp

Vc.

p

Piano

loco

Measures 72-76:

- Voice:** Treble clef, 72. *poco* (measures 72-74), *pp* (measures 75-76). Notes: G4, A4, B4, C5, B4, A4, G4.
- Vc.:** Bass clef, 72. *poco* (measures 72-74), *pp* (measures 75-76). Notes: G2, A2, B2, C3, B2, A2, G2.
- Piano:** Grand staff, 72. *poco* (measures 72-74), *pp* (measures 75-76), *ppp* (measures 77-78). Notes: G4, A4, B4, C5, B4, A4, G4.

Measures 77-81:

- Voice:** Treble clef, 77. *mp* (measures 77-78), *non troppo* (measures 79-81). Notes: G4, A4, B4, C5, B4, A4, G4. Lyric: Ah - - - - -
- V.:** Treble clef, 77. *ppp* (measures 77-78). Notes: G4, A4, B4, C5, B4, A4, G4.
- Vc.:** Bass clef, 77. *ppp* (measures 77-78). Notes: G2, A2, B2, C3, B2, A2, G2.
- Piano:** Grand staff, 77. *pp* (measures 77-78). Notes: G4, A4, B4, C5, B4, A4, G4.

Measures 82-86:

- Voice:** Treble clef, 82. (Ah...) (measures 82-84), *mf* (measures 85-86). Notes: G4, A4, B4, C5, B4, A4, G4.
- V.:** Treble clef, 82. *p dolce* (measures 82-84), *mp* (measures 85-86), *mf* (measures 87-88). Notes: G4, A4, B4, C5, B4, A4, G4.
- Vc.:** Bass clef, 82. *p dolce* (measures 82-84), *mp* (measures 85-86), *mf* (measures 87-88). Notes: G2, A2, B2, C3, B2, A2, G2.
- Piano:** Grand staff, 82. *8va* (measures 82-84), *mf* (measures 85-86). Notes: G4, A4, B4, C5, B4, A4, G4.

Score for Voice, Violin (V.), Viola (Vc.), and Piano.

Measures 87-90:

- Voice:** Melody with lyrics "(Ah...)". Dynamics: *f*, *mf*, *f*.
- V.:** Rapid sixteenth-note passages. Dynamics: *mp*, *mf*.
- Vc.:** Sustained notes. Dynamics: *p*.
- Piano:** Accompanying figures. Dynamics: *mp*, *mf*.

Measures 90-93:

- Voice:** Continuation of "(Ah...)".
- V.:** Rapid sixteenth-note passages. Dynamics: *f*.
- Vc.:** Sustained notes. Dynamics: *mf*.
- Piano:** Accompanying figures. Dynamics: *mf*.

Measures 94-97:

- V.:** Rapid sixteenth-note passages. Dynamics: *pp*.
- Vc.:** Sustained notes. Dynamics: *mf*, *mp*.
- Piano:** Accompanying figures. Dynamics: *pp*.

V. 119

Vc.

Piano

8^{va}

119

Leo. →

V. 123 *sempre f e giocondo*

Vc. *sempre f e giocondo*

Piano

(8^{va})

123 *sempre f e giocondo*

V. 127

Vc.

Piano

(8^{va})

127

130

V. *mf*

Vc. *mf*

Piano *mf*

sempre Ped →

(8^{va})

134

V.

Vc.

Piano *p*

** Ped*

138

V. *p arco*

Vc. *p arco*

Piano *pp*

poco rit.

Poco meno ≈ 92

** con Ped*

143 *poco rit.* *a tempo*

V. *p*

Vc. *p*

Piano *poco rit.* *a tempo* *mf* *ped.* *

147 *pp* *mp espress.*

V. *pp* *mp espress.*

Vc. *pp* *mp* *mp espress.*

Piano

152 *mf* *pp* *mp*

V. *mf* *pp* *mp*

Vc. *mf* *pp* *mp*

Piano *pp*

157

V. *pp* *mf* *mp* *pp* *molto rit.*

Vc. *pp* *mf* *mp* *pp*

Voice 163 *a tempo* *p* 132

So - no sta - to u - no sta - gno di bu - io

V. *pp* *col legno* *poco*

Vc. *pp* *col legno* *poco* *ord.* *p*

Piano 163 *a tempo* *pp* *ppp* *8vb* *p* 132

169

V.

Vc. *mp*

Piano 169 *mp* *pp*

174

Vc.

pp

Piano

174 *ppp* *8vb*

175

176

177

ppp *8vb*

180

Vc.

ppp *pp*

Piano

pp *ppp*

180

Violoncello and Piano score, measures 186-190. The Violoncello part (top staff) begins in 2/4 time, then changes to 3/4. It features a melodic line with a fermata over the final measure. The Piano part (bottom staves) also begins in 2/4, then changes to 3/4. It includes a section marked *ppp* (pianissimo) with a fermata over the final measure, and a section marked *8vb* (8va below) with a fermata over the final measure.

191

Vc.

pp

ppp

pp

sul tasto

Piano

191

pp

ppp

pp

8^{va}

197

V. *con calore e intensità*
ord. **mp**

Vc. **ppp**

Piano **mp**
con Ped.

197

203

V. *sul G*
mf

Vc. **pp** ord. **mp**

Piano

203

209

V. **tr**

Vc.

Piano

209

This musical score page contains measures 197 through 209. It is written for Violin (V.), Viola (Vc.), and Piano. The Violin part begins at measure 197 with a whole rest, followed by a melodic line starting at measure 203 marked 'sul G' and 'mf'. The Viola part starts at measure 197 with a bass line marked 'ppp', which becomes 'mp' at measure 203. The Piano part is in a grand staff, with the left hand playing a series of sustained octaves marked '(8vb)' from measure 197 to 203, then moving to a more active bass line. The right hand of the piano plays arpeggiated chords. Dynamics include 'con calore e intensità', 'ord.', 'mp', 'ppp', 'pp', 'mf', and 'tr' (trill). The page number '18' is at the top left.

214 *poco rit.* ----- *a tempo*

V. *mf* *p* *ppp*

Vc. *mp* *pp* *ppp*

Piano *poco rit.* ----- *a tempo* *f* 9

214

Vivace e luminoso $\text{♩} = 208$

219 *f pizz.* *mf*

Vc. *f pizz.* *mf* *f* *>*

Vivace e luminoso $\text{♩} = 208$

Piano *p* *mf* *f*

219

223 *arco* *f* *mp*

Vc. *(sempre pizz.)* *f* *mp*

Piano *f* *mp*

223

226

V. *f* *f* *mp* *f*

Vc. *mf* *f* *mf* *f* *mp*

Piano *f* *mf* *f* *mp*

229

V. *mf* pizz. arco *mp*

Vc. *mf*

Piano *mf* *mf* *mf* *mf*

232

Voice *mf* anelante
O - ra

V. *f* *mf* pizz.

Vc.

Piano *p*

232

Reo.

235

Voice

mor-do co-me/un bam-

V.

Vc.

Piano

235

Lea.

f

fp

Lea.

239

Voice

bi - - - no la ma - mel - - - -

V.

mf

f

arco

gliss. sul sol

Vc.

mf

f

arco

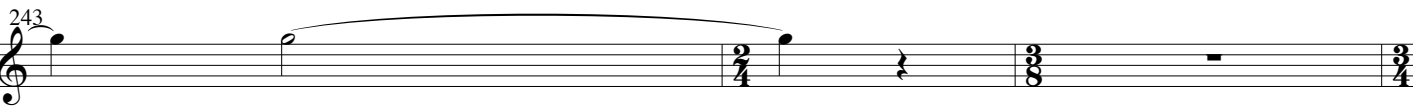
gliss. sul do

Piano

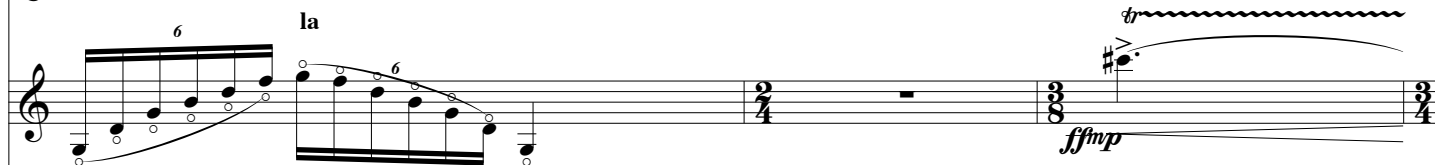
239

Lea.

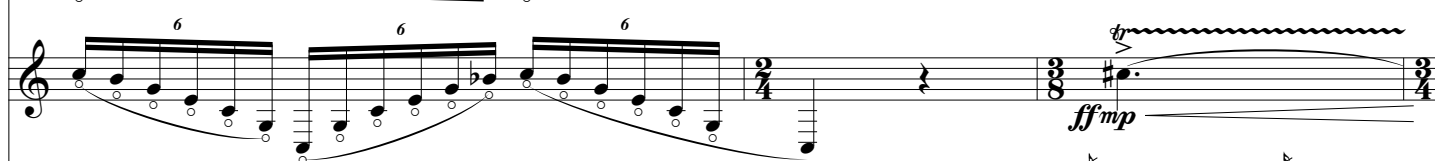
Voice



V.



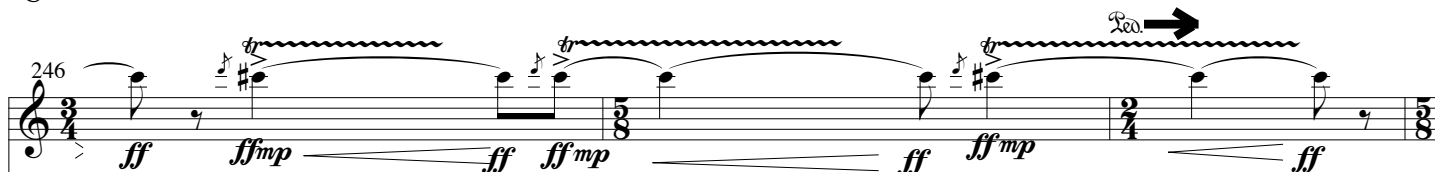
Vc.



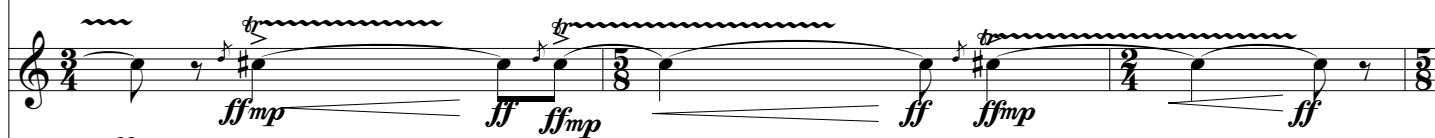
Piano



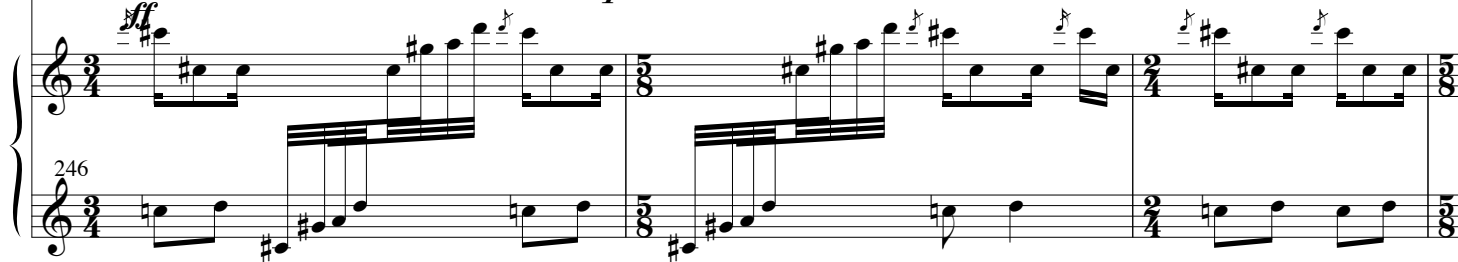
V.



Vc.



Piano



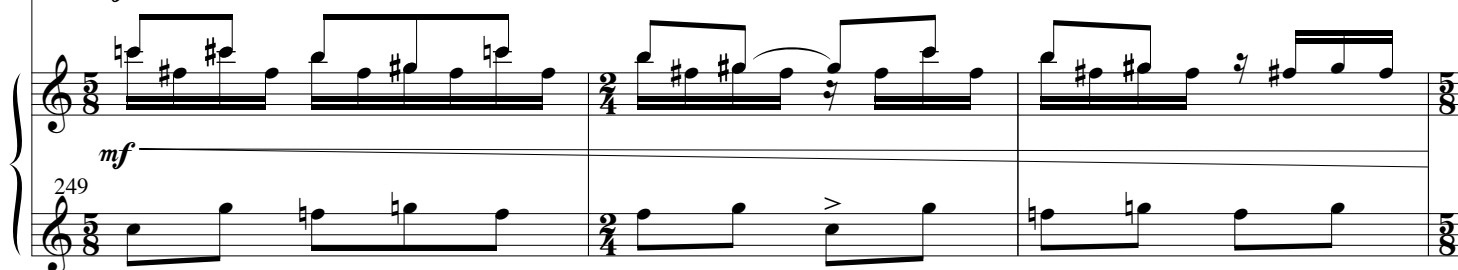
V.



Vc.



Piano



252 *ff*

Vc. *ff arco*

Piano *ff*

255 *pp* lo

V. *ff* *molto* *pp*

Vc. *ff* *molto* *pp*

Piano *ff* *mf* *pp*

257 *mp* *mf*

Vc. *pizz. mp* *mf arco*

Piano *mp* *mf*

* *con Leo*

260

Voice

Ah...

V.

pp *mp*

Vc.

mp

Piano

pp *mf*

263

Voice

V.

p

Vc.

p *mf*

Piano

266

Voice

mp

V.

mf *mf*

Vc.

mp *mf*

Piano

mf *p* *mf*

266

Detailed description: This musical score page contains measures 260 through 266. It is written for four staves: Voice, Violin (V.), Viola (Vc.), and Piano. The key signature has one sharp (F#).
- Measure 260: Voice has a long note with a slur and the text 'Ah...'. Violin has sixteenth-note runs with slurs and a '6' above, starting at *pp* and ending at *mp*. Viola has a whole note chord. Piano has a complex texture with sixteenth-note runs in the right hand and chords in the left hand, starting at *pp* and moving to *mf*.
- Measure 263: Voice has a melodic line. Violin has sixteenth-note runs with slurs and a '6' above, starting at *p*. Viola has a melodic line starting at *p* and moving to *mf*. Piano continues with similar textures.
- Measure 266: Voice has a melodic line moving to *mp*. Violin has sixteenth-note runs with slurs and a '6' above, starting at *mf*. Viola has a melodic line moving to *mf*. Piano has a complex texture, starting at *mf*, moving to *p* in the left hand, and then back to *mf*.
The page number '24' is at the top left. Measure numbers '260', '263', and '266' are placed above the first staff of each system.

274 *poco rit.* *f* *a tempo*

Voice

V.

Vc.

Piano

pp *mf* *p* *mf* *mp*

pp *poco rit.* *a tempo*

271 *8va - 1*

276

Voice

V.

Vc.

Piano

ppp *pp* *mf* *sul ponticello*

276

280 *mf*

Voice

V.

Vc.

Piano

p *pp* *mp* *mf* *pochissimol*

280 *8va -* *8va - 2*

8va - 2

Voice

V.

Vc.

Piano

285

mf arpeggiando

ord.

glissando sul sol

mf

f

(8^{va})

a - - - - co

Voice

V.

Vc.

Piano

288

p con mistero

d'u - ni -

molto

pp

p

ppp

p

sempre $\text{se} \rightarrow$

Voice

V.

Vc.

Piano

293

ver - - - -

pp

mp

mf

mp

pp

mf

8^{va}

299

V. *fp* *pp* *p* *pp* *8va*

Vc. *p* *pp*

Piano *f* *pp* *8va*

304

V. *8va*

Vc.

Piano *8va*

304

sempre Leo. →

308

V. *8va*

Vc.

Piano *dolcissimo* *pp cristallino*

308

8va

Violin (V.)

Viola (Vc.)

Piano

Measures 312-319.

Measures 312-315: Violin (V.) starts with a melodic line marked *mp*, then *fp*, and finally *mf*. Viola (Vc.) has a melodic line marked *mf pizz.* and *arco mf*. Piano has a complex accompaniment marked *mp* and *mf*. Measure 315 includes a note marked with an asterisk (*) and a dynamic change to *mf*. Measure 316: Violin (V.) has a melodic line marked *molto*, *pp*, and *p*. Viola (Vc.) has a melodic line marked *p*. Piano has a complex accompaniment marked *pp*. Measure 317: Violin (V.) has a melodic line marked *pp*. Viola (Vc.) has a melodic line marked *p*. Piano has a complex accompaniment marked *pp*. Measure 318: Violin (V.) has a melodic line marked *mp*. Viola (Vc.) has a melodic line marked *mp*. Piano has a complex accompaniment marked *mf*. Measure 319: Violin (V.) has a melodic line marked *mp*. Viola (Vc.) has a melodic line marked *mp*. Piano has a complex accompaniment marked *mf*.

Annotations:

- 312
- 316
- 319
- 8va
- 8va
- 8va
- See until the end
- mp
- fp
- mf
- mf pizz.
- arco mf
- molto
- pp
- p
- pp
- mf

325

V. *mf* *pp*

Vc. *pizz.* *mf* *arco*

Piano

325

sempre *And.* →

329

V. *ppp* *niente*

Vc. *pp* *niente*

Piano

329

ppp

until the sound dies

✱