

Turning

Mark Gustavson

for Bass Clarinet, Percussion, Piano & Contrabass

Duration: ca. 15 minutes

Percussion

Vibraphone

Hi-hat

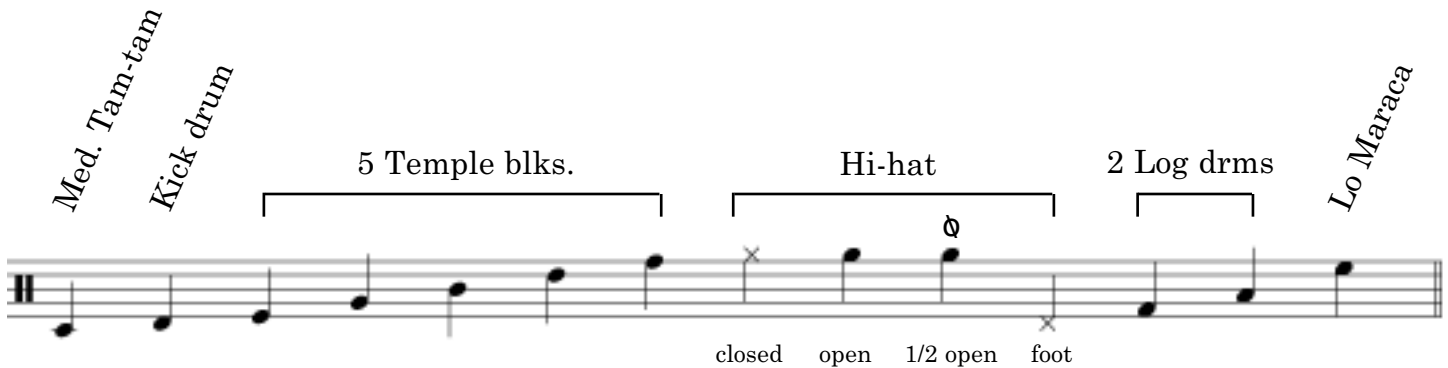
Kick Drum

Low Maraca

2 Log Drums

5 Temple Blocks

Med. Tam-tam



Accidentals carry through the measure.

Pitch Bending on Vibes

To bend a note on the vibraphone, use a yarn vibraphone mallet, and a hard mallet (with a mallet head made of hard rubber or plastic, or a very hard wrapped mallet head - although this technique is difficult to execute with a wrapped mallet).

1. Rest the hard mallet on a nodal point of a bar;
2. strike the bar with the "normal" mallet;
3. pressing the hard mallet into the bar, drag it away from the nodal point.

Several things to remember with this technique:

you may have to experiment with your choice of hard mallet.

you may have to experiment with the amount of pressure used to press the hard mallet into the bar.

The pitch will lower as you move the hard mallet away from the nodal point; if you get past the midpoint of the bar, and start moving towards the other nodal point, the pitch will begin to rise. it is easier to execute this technique by pulling the mallet towards you, towards the center of the bar, rather than pushing it.

Turning

Mark Gustavson (2012)

Menacingly $\text{♩} = 56$ Exuberantly $\text{♩} = 56$ ($\text{♩} = 168$)

Bass Clarinet

Volcalize

Chant *f*

Dharm-ma - cak - kra - pra - var - ta - na

Percussion

5 Temple blk. (hd. yrn.) *p*

Med. tam-t (beater) *mf*

Hi-Hat (rattan) *mf*

(dome) (edge)

Volcalize

Chant *f*

Dharm-ma - cak - kra - pra - var - ta - na

Piano

mf

ff loco

Volcalize

Chant *f*

Dharm-ma - cak - kra - pra - var - ta - na

Contrabass

p

ff molto

f

Volcalize

Chant *f*

Dharm-ma - cak - kra - pra - var - ta - na

* Bass Clarinet sounds as written.
Contrabass sounds one octave lower than written.

7 10

Perc.

Pno.

mf p mf p mf p mf p mf p mf p

11 *poco rit.*

Perc.

Pno.

mf p ff mf loco p mf loco

8vb *8vb*

14

Menacingly $\text{♩} = 56$

B.Cl.

Chant

f

Dharm - ma - cak - kra - pra - var - ta - na

5 Temple blk. (hd. yrn.)

p

mf

Med. tam-t (beater)

Chant

f

Dharm - ma - cak - kra - pra - var - ta - na

Vibes

(Gliss.)

mp

Pno.

mf

loco

Chant

f

Dharm - ma - cak - kra - pra - var - ta - na

arco

p

fp

fp

f

p

fp

3 ricochet

sul pont. (Gliss.)

Chant

f

Dharm - ma - cak - kra - pra - var - ta - na

26

B.Cl.

Perc.

Pno.

Cb.

(dome)

(edge)

f *p* *f* *p* *mf* *p* *mf* *p* *mf*

f *p* *f*

29

30

rit.

Perc.

Pno.

Cb.

p *mf* *p* *mf* *p* *mf* *p* *mf*

8vb

arco

p

Menacingly $\text{♩} = 56$

33

B.Cl.

Chant

f

Dharm-ma-cak-kra-pra-var-ta-na

5 Temple blk. (hd. yrn.)

p

Med. tam-t (beater)

Chant

f

Dharm-ma-cak-kra-pra-var-ta-na

Vibes

p

Pno.

mf

pp

pp

loco

3

5

3

Chant

f

Dharmmacakkrapravarta-na

Cb.

p

mf

p

mf

arco sul pont. ord.

pizz.

Chant

f

Dharm-ma-cak-kra-pra-var-ta-na

37 40

B.Cl. *p espr.*

Perc. *p violently blooming* *mp* (Gliss.)

Pno. *p violently blooming* *pp*

Cb. *f* *p* *mf* *sul pont.*

pizz. (Gliss.) *arco* *(Gliss.)* *(Gliss.)* *(Gliss.)*

3 *3*

6/4

41 *accel.*

B.Cl. *mf cresc.* *fz* *fz*

Perc. *Kick Dr* *mf* *f* *Hi-Hat (rattan)*

Pno. *p cresc.*

Cb. *ord.* *mf cresc.* *fz* *fz* *ff*

6/4

Exhuberantly $\text{♩} = 56$ ($\text{♩} = 168$)

45

B.Cl.

f

Perc.

(dome) > (edge)

Pno.

ff

Red

Cb.

pizz.

f p f p f p f p

48

B.Cl.

50

Perc.

(dome) > (edge)

Pno.

Cb.

f p f p f p f p

51

B.Cl.

fz *p*

Perc.

ord. (dome) (edge)

Pno.

ff *sempre*

Cb.

f *p* *f* *p* (Gliss.) *f* *p* *f* *p*

54

B.Cl.

f *mf*

Perc.

ord. *mf*

Pno.

loco *mf* *p* *mf* *p* *mf* *p* *mf* *p* *mf*

Cb.

arco *f* *mf*

Red. ----- *

58 60

B.Cl.

Perc.

Pno.

p mf p mf p mf p mf p

Cb.

62 rit.

B.Cl.

Perc.

mf f

Pno.

fz

p

Cb.

p

Leo. ————— * Leo.

B.Cl.

pp

5 Temple blk. (hd. yrn.)

p

(hd. yrn.)

 m_f

Med. tam-t (beater)

Chant

Dharm - ma - cak - kra - pra - var - ta - na

Pno.

 mf

8vb

Leo

Chant

Dharm - ma - cak - kra - pra - var - ta - na

Cb.

Chant

Dharm - ma - cak - kra - pra - var - ta - na

70

B.Cl. *pp* *echo* *p*

Perc. *mf* *Gliss.* *mp* *p* *violently blooming* *mp*

Pno. *mp* *pp* *pp* *loco* *3* *8vb* *mp* *violently blooming*

Cb. *mf* *Gliss.* *ff* *sul pont.* *3* *pizz. ord.* *ff* *arco* *fp*

73

B.Cl. *mf* *f* *mp* *mf* *p* *p*

Perc. *mp*

Pno. *pp* *3* *3* *loco* *pp* *3* *8vb*

Cb. *f* *p* *f* *sul pont. ord.*

76

B.Cl.

Perc.

Pno.

Cb.

f *mp* *p* *mf* *f* *mf*

p *mp* *pp* *f*

mp *pp* *f* *p*

ff *f* *p* *f* *ff* *mf* *f*

ricochet

(Gliss.)

(Gliss.)

(Gliss.)

3

6

6

79

80

poco rit.

a tempo

B.Cl.

Pno.

Cb.

ff *pp*

pp *sost.*

(take time)

pizz.

arco sul pont.

ff *f* *pp*

84 *accel.* Exuberantly $\text{♩} = 56$ ($\text{♩} = 168$)

B.Cl. *mp* *mf* *fz*

Perc. *Kick Dr* *mf*

Pno. *mf*

Cb. *mf* *fz* *fz*

88 90

B.Cl. *f* *fz* *ff* *f*

Perc. *Hi-Hat* (rattan) *f*

Pno. *f* *ff* *Red.*

Cb. *f* *fz* *ff* *f* *pizz.* *p* *f*

92

B.Cl.

Perc.

Pno.

Cb.

f

(dome)
(edge)

ord.

p *f* *p* *f* *p* *f* *p* *f* *p*

(Gliss.)

Lead

96

B.Cl.

Perc.

Pno.

Cb.

f

(dome)

ord.

(dome) (edge) ord.

(dome) (edge) ord.

f *p* *f* *p* *f* *p* *f* *p* *f* *p*

(Gliss.)

103

103

B.Cl.

Perc.

Pno.

Cb.

The musical score for measures 103-106 is written for four instruments: Basset Clarinet (B.Cl.), Percussion (Perc.), Piano (Pno.), and Contrabass (Cb.).

- B.Cl.:** The part begins with a whole rest in measure 103, followed by a whole rest in measure 104. In measure 105, it plays a quarter note G4, a quarter note F4, and a quarter note E4. In measure 106, it plays a quarter note D4.
- Perc.:** The part features a complex rhythmic pattern. In measure 103, it plays a series of eighth notes with accents (>) and a 'dome' marking. In measure 104, it continues with eighth notes and a 'dome' marking. In measure 105, it plays eighth notes with a 'dome' marking and a 'dome' marking. In measure 106, it plays eighth notes with a 'dome' marking and a 'dome' marking.
- Pno.:** The piano part consists of two staves. The right hand plays a series of eighth notes with a 'dome' marking. The left hand plays a series of eighth notes with a 'dome' marking. In measure 106, the right hand plays a series of eighth notes with a 'dome' marking and a 'dome' marking. The left hand plays a series of eighth notes with a 'dome' marking and a 'dome' marking.
- Cb.:** The contrabass part begins with a half note G2 in measure 103, followed by a half note F2 in measure 104. In measure 105, it plays a half note E2 and a half note D2. In measure 106, it plays a half note C2.

106

B.Cl.

Perc.

Pno.

Cb.

f *p* *f* *p* *f* *p* *<f* *f* *p* *f*

Red. * Red. * Red. *

(edge) ord. (dome)

ff *f*

110

B.Cl.

Perc.

Pno.

Cb.

mf

(edge) (dome) (edge) ord.

loco

8va

f *f* *f* *p* *mf* *p* *f* *p*

p *f* *p* *f* *p* *mf*

arco

114

B.Cl.

Perc.

Pno.

Cb.

f

mf

mf

f

p

mf

p

f

Red. --- *

118

120

B.Cl.

Perc.

Pno.

(wire)

p

mf

122

B.Cl.

Perc.

Pno.

Cb.

(Harmonic Gliss.)
III
(sounds an octave lower)

IV

[illegible]

130

B.C.

Pno.

Cb.

p

accel.

133 **a tempo**

B.Cl.

Pno.

Cb.

mf *mp* *ff* *8vb* *f* *mf*

138 **140** **rit.**

B.Cl.

Perc.

Pno.

Cb.

p *Med. tam-t (beater) (l.v.)* *pp* *pp* *pp* *8vb* *mf* *mp* *p*

143 Menacingly $\text{♩} = 56$

B.Cl.

ppp *mf > p* *mf* *p dramatically* *f*

Perc.

5 Temple blk. (hd. yrn.) *p*

mf Med. tam-t (beater)

Chant *f*

Dharm-ma-cak-kra-pra-var-ta-na

Pno.

mf *pp loco* *f*

Chant *f*

Dharmmacakkrapravartana

Cb.

p *mf* *f* *fz* *ff*

sul pont. *ricochet* *pizz.*

(Gliss.) *(Gliss.)*

Chant *f*

Dharm-ma-cak-kra-pra-var-ta-na

147

B.Cl.

Perc.

Pno.

Cb.

pp

violently blooming

Vibes

p *mp*

pp

loco

8vb

arco *pizz.* *arco* *pizz.*

f *boldly* *sfz*

3

150

B.Cl.

Perc.

Pno.

Cb.

pp

pp

violently blooming

p *mp*

pp

loco

8vb

violently blooming

mp

(L.H. slap pizz.) *arco* *(Gliss.)* *(Gliss.)* *pizz.*

ff *6* *sfz* *ff*

153

B.Cl.

p *mf* *p* *mf* *p*

Pno.

pp

3

3

Cb.

ff (Gliss.) arco passionately (Gliss.)

157

B.Cl.

mf *f* *mf*

Perc.

5 Temple blk.
Lo maraca

mf

3

3

Pno.

pp loco *mp*

3

3

8vb

Cb.

ff pizz. arco ricochet pizz. 3 arco 3 pizz. arco ricochet *sfz*

160

B.Cl. *mf* *violently blooming* *ff* (flt. tng.)

Perc. *mf* *f* *Viol.*

Pno. *f* *violently blooming* *pp* *ff* *8vb*

Cb. *ff* *pizz. arco* (Gliss.)

163

B.Cl. *pp* *mf* *pp* *mp* *(sub-tone) ord.* *mf* *p*

Perc. *mp* *

Pno. *pp* *loco* *3* *3* *mp* *8vb*

Cb. *f* *p* *sffz* *mp* *f* *p* *ff* *(Gliss.)*

168 170

B.Cl. *pp*

Perc. Kick Dr *p*

Pno. *pp sost.*

Cb. *mp* *ff* *mf* *p* *ff* *mf* *p* *ff* *mf* *p*

arco (L.H. slap pizz.) arco pizz. (L.H. slap pizz.) arco pizz. (L.H. slap pizz.) arco

-----*

174 accel.

B.Cl.

Perc.

Pno. *p cresc.*

Cb. *ff* *mf* *p* *ff* *mf* *p* *ff* *mf* *p*

(L.H. slap pizz.) arco (L.H. slap pizz.) arco pizz. (L.H. slap pizz.) arco pizz. (L.H. slap pizz.) arco

187

B.Cl.

Perc.

Pno.

Cb.

ff

ff

ff

pizz.

ff

percutively

rhythmically

190

B.Cl.

Perc.

Pno.

Cb.

(dome)

(edge)

ord.

193

B.Cl.

Perc.

Pno.

Cb.

f

(dome)

ord.

Red

196

B.Cl.

Perc.

Pno.

(edge) ord. (dome) ord. (edge) ord. (dome) ord. (edge) ord. (dome)

*

199 200

B.Cl.

Pno.

Measures 199-200. The B.C. part has a single note in measure 199 and rests in 200. The Pno. part features complex chords and a dense bass line with many sixteenth notes and slurs.

202

B.Cl.

Pno.

Measures 202-204. The B.C. part has a single note in measure 202 and rests in 203-204. The Pno. part features complex chords and a dense bass line with many sixteenth notes and slurs.

205

B.Cl.

Pno.

Measures 205-207. The B.C. part has a single note in measure 205 and rests in 206-207. The Pno. part features complex chords and a dense bass line with many sixteenth notes and slurs.

208 210

B.Cl.

Perc.

Pno.

Cb.

ord.

ff

211

B.Cl.

Perc.

Pno.

Cb.

(edge)

f

f

8va loco

8va

214

B.Cl.

Perc.

Pno.

Cb.

ff

f

ff

loco

(dome)

ord.

217

B.Cl.

Perc.

Pno.

Cb.

mf

(dome)

(edge)

fp

(Gliss.)

220

220

B.Cl.

Perc.

Pno.

Cb.

fp

ff

(dome)

(edge)

ord.

(dome) ord.

(dome)

(dome) ord. *sim.*

mf

ff

Leg.

(Gliss.)

(Gliss.)

223

B.C. *fp* *fp*

Perc. *p* (dome) ord.

Pno. *ff* rhythmically

Cb. arco *fp* *fp*

226

B.Cl.

fp *ff*

Perc.

(dome) ord. (dome) ord. (dome) ord. (dome) ord. (dome) ord. (dome) ord. (dome) ord. (dome) ord. (dome) ord.

Pno.

Cb.

fp *mf*

229

230

B.Cl.

ff

Perc.

(dome) ord. (dome) ord. (dome) ord. (dome) ord. (dome) ord. (dome) ord. (dome) ord. (edge)

Pno.

Cb.

ff

232

B.Cl.

Perc.

Pno.

Cb.

ord.

f

8va

fff

ff

pizz.

ff

Reo

* Reo

* Reo

* Reo

* Reo

* Reo

* Reo

* Reo

* Reo

(8va)

(dome)

(edge)

Reo

* Reo

* Reo

ff

234

B.Cl.

Perc.

Pno.

Cb.

(dome)

(edge)

(8va)

Reo

* Reo

* Reo

ff

237 240

B.Cl.

Pno.

Cb.

ff *arco* *p* *mf* *p* *mf* *p*

(Gliss.)

ff *p* *mf* *p*

243

B.Cl.

Perc.

Pno.

Cb.

fp *mf* *f* *p* *f* *p* *mf* *p* *mf* *p*

f *f* *p* *f* *p* *mf* *p* *mf* *p*

mf *mf* *p* *mf*

248 250

B.Cl.

Pno.

sost.

Cb.

252

B.Cl.

Perc.

Pno.

f *p* *mp*

f

8va

f

Red. ** Red.* ***

(Gliss.) *pizz. arco* *(Gliss.)*

sfz *p* *mp*

258 260

B.Cl. *mf*

Pno. *loco*
p *mf* *p mf* *pmf* *p*

Cb.

262

B.Cl. *f* *fp* *f*

Perc. (wire) *< f*

Pno. *p* *mf* *p* *f* *ff*

Cb. *Red.* *(Harmonic Gliss.)* *II* *< fp* *f*

265

B.Cl.

Perc.

Pno.

dramatically

p

mf *p* *fp* *mf* *mf* *p* *mf* *p*

Red *** *Red*

270

Slower

269

B.Cl.

Perc.

Pno.

cont. *p* *mf*

(l.v.) *p*

ff *p*

Red *** *Red* *** *Red* *** *Red* ***

274

B.Cl.

Pno.

mp

p

Reo. *

277

B.Cl.

Pno.

f

pp

mp

p

p

a tempo

Reo. *

280

Pno.

283

B.Cl.

pp *dolce* *pp* *pp* *pp*

Pno.

pp

8vb-

Cb.

(Gliss.) *pp* *pp* *pp* *pp*

dolce

287

B.Cl.

pp *mf*

rit.

Pno.

(8vb-)

Cb.

(Gliss.) *pp* *f*

(Gliss.)

Menacingly $\text{♩} = 56$

B.Cl.

p *f*

5 Temple blk. (hd. yrn.) *p*

mf Med. tam-t (beater) *f* Vibes *mf*

Perc.

Chant *f*

Dharm-ma-cak-kra-pra-var-ta-na

Pno.

mf *f*

3 loco 5 3 5

(8vb)

Chant *f*

Dharm-ma-cak-kra-pra-var-ta-na

Cb.

p *f* *f* *mf* 3 *f*

(L.H. slap pizz.)

Chant *f*

Dharm-ma-cak-kra-pra-var-ta-na

voc.

voc.

voc.

voc.

299

299

300

B.Cl.

Perc.

Pno.

Cb.

arco

(Gliss.)

pizz.

arco sul pont. ricochet

f

mf

pp

mp

pp loco

8vb

Red.

mf

p

mf

p

mf

f

p

302

B.Cl. *p* *f* *p*

Perc. *violently blooming* *mp* *f* *2 Log drums*

Pno. *violently blooming* *pp* *pp*

Cb. *(Gliss.)* *f* *mf* *f* *p*

pizz. *arco*

305

B.Cl. *pp*

Perc. *Vibes* *p* *violently blooming* *mf*

Pno. *violently blooming* *mf*

Cb. *fp* *pp* *(Gliss.)*

[illegible][illegible]

317

B.Cl.

Perc.

Pno.

Cb.

320

p

mf

mp

pp

p

pp

f

p

321

B.Cl.

Perc.

Pno.

Cb.

ppp

mf

f

p

f

8vb

loco

pizz.

arco

(Gliss.)

September 7, 2012
Mastic Beach, NY