

If This Be Love, to Draw a

12"



Baritone



Samuel Daniel (1562?-1619)

Bb Clarinet



Bassoon



Double Bass



gliss

n

pp

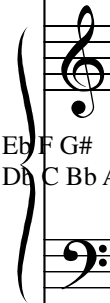
Guitar



Percussion



Harp



E^b F G#
D^b C B^b A *f*

pp

*

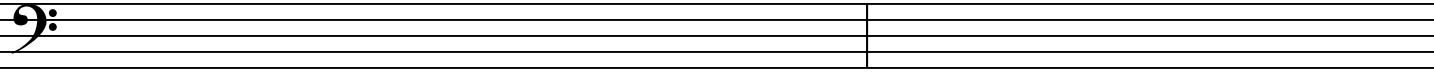
8vb

* repeat pitches ad lib, 1"-4" between attacks

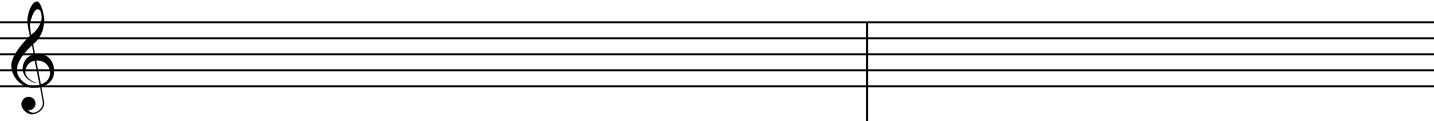
↓ 10"

↓ 10"

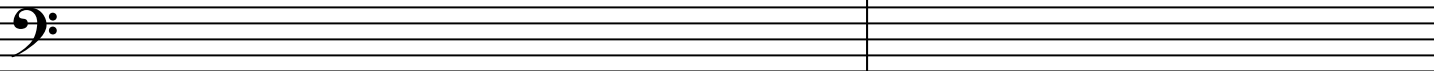
Bar.



Cl.



Bsn.



D.B.

• = 54 ca

**

p

** cresc/dim's non sync with glisses

Gtr.

n *p*

light pick ad lib

Pc.

n *p*

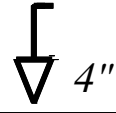
vibes

Hp.

n *pp*

Hp.

l.v.



Bar.

Cl.

Bsn.

D.B.

Gtr.

Pc.

Med Tom
Floor Tom
Bass Drum

brushes

p

Hp.

Hp.

ff

Slow, Plaintive



2"

Like a Giant Rip!



f



Bar.

Cl.

fast, accel
1/2
tr *poss*

ff *fff* *sfz*

fast, accel
1/2
tr *poss*

n *f* *n*

Bsn.

D.B.

fast, accel *poss*

ff *fff* *sfz*

Gtr.

fast, accel *poss*

ff *fff* *sfz*

Pc.

Hp.

Hp.

mf *f* *sfz*

ff *fff*

secco

Bar. *mf* *f*

Cl.

Bsn. *sfz* *f* *n*

D.B. *sfz* *f* *n* *gliss*

Gtr. *sfz* *pp* *f*

Pc. Tam Tam *mf* *f* *hands out of phase*

Hp. *sfz* *pp* *f* *l.v.* *8vb* *sfz*

Detailed description: This is a page of a musical score for a chamber ensemble. The score is divided into two systems. The first system includes Baritone (Bar.), Clarinet (Cl.), Bassoon (Bsn.), Double Bass (D.B.), and Guitar (Gtr.). The second system includes Percussion (Pc.) and Piano (Hp.). The Baritone part starts with a dynamic of *mf* and a hairpin crescendo leading to *f*. The Bassoon and Double Bass parts feature a *sfz* (sforzando) dynamic. The Guitar part begins with *sfz*, moves to *pp* (pianissimo) for a tremolo section, and then returns to *f* for a glissando. The Percussion part includes a Tam Tam and a section marked *mf* and *f* with the instruction "hands out of phase". The Piano part also features a *sfz* dynamic, a *pp* tremolo section, and a section marked *f* with "hands out of phase". A low octave section is marked *8vb* and *l.v.* (left hand).