

S20040024 Composer

AFFIX TO MATERIAL

Steve Horowitz

Birthdate:

Studies: -

THE EVENING NEWS - 8 Minutes

inst: solo clarinet

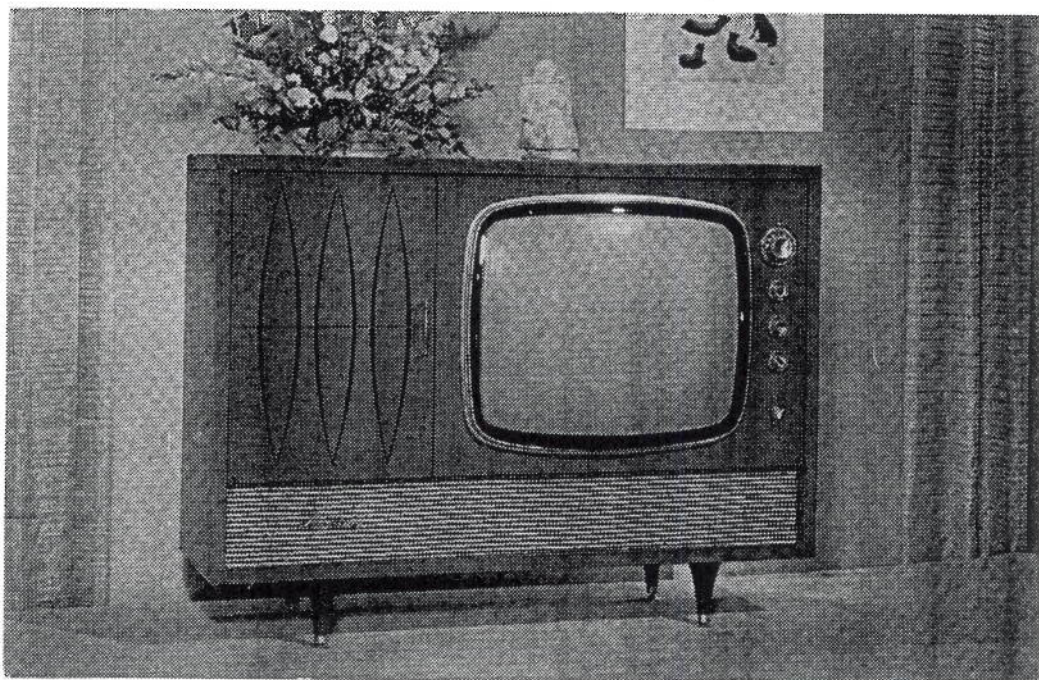
on file: score: Y parts: N recrdng: CD

IMPROV IMPROVISE! CONFERENCE IN SPRING, 2004

Cut #8 on
CD
~~AA~~

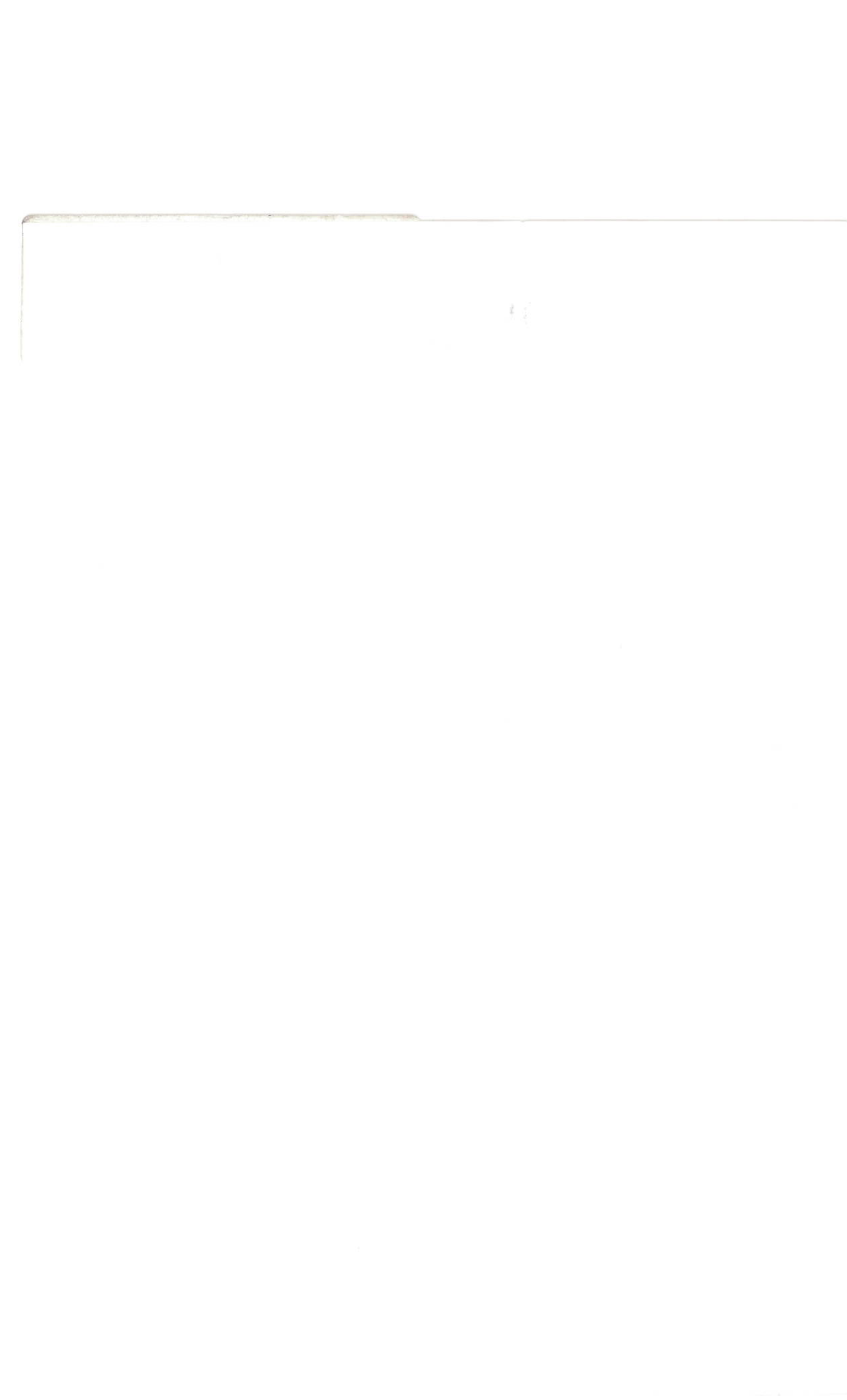
THE EVENING NEWS

for solo clarinet



Steve Horowitz

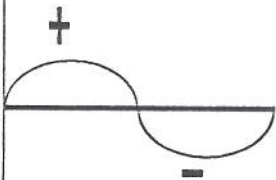
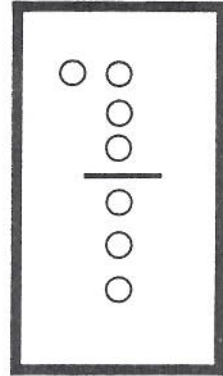
1989



LEGEND; SYMBOLS

FINGERING CHART

Without exception, all the key names refer to the note the key produces in the lower register of the instrument. The Register Key is designated by the letter "R".



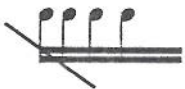
Bend the pitch over (+) and under (-) the written pitch.



Highest note possible



Lowest note possible



play figure as fast as possible



muted note (harmonic)

place bell against calf of leg. Make sure the entire open portion of the bell is covered. Then play the note indicated in parantheses. The upper note is the note that should sound.

Performance Instructions

1) The sections are to be played in the order that they are notated; top to bottom and left to right.

2) When moving from section to section, leave a slight pause to set the proper pacing. Some breaks may be longer than others (this applies to commercials as well as news segments).

3) When playing within a section, an attempt should be made to have as few breaks as possible in order to create a unified flow.

4) The structure of the piece is based on an actual broadcast of the evening news. For an idea on how the pacing should feel, **watch the news a lot!**

Approximate running time: 7 1/2 minutes.

The Evening News

for my good friend Tim Bonenfant

Steve Horowitz

1 OPENING

$\text{♩} = 100-110$

Musical notation for the Opening section, featuring a melodic line with dynamic markings *f* and *p*.

2 MURDER

A Buried Bodies

10 seconds

Musical notation for section A Buried Bodies, including guitar chord diagrams and dynamic markings *fff*, *pp*, and *ff*.

B Jonestown

$\text{♩} = 72$

Musical notation for section B Jonestown, including dynamic markings *p*, *f*, *expressive*, *p*, *ff*, and *moito vib.*, along with a guitar chord diagram.

3 POLITICS

A National

Musical notation for section A National, featuring a fast melodic line with dynamic marking *p*.

B & C Local

Musical notation for sections B & C Local, including dynamic markings *f*, *mp*, and *fast as possible: even*, *wavy & seasick*, and *fast as possible: even*.

fast as possible: even

(highest note possible)

fast as possible

p overblown

(lowest note possible)

f

p

ACCIDENT & DAMAGE

A A Falling Crane

(highest note possible)

7 sec.

p *ff*

4

B Wind & Rain

10 seconds

very wet wind sounds;
no tone; barely audible
sometimes very violent, with lots of motion

ppp

pppp extreme sub-tone

finger low E; glissando of harmonics using jaw/throat only (register key may help the initial production of the glissando)

C Snow

like a bed of snow falling on a hidden forest

ppp *f* *ppp* *f* *pp*

mp

ppp *f*

5 COMING UP NEXT...

mp *mf*

mf

molto espressivo

$\text{♩} = 72$

6 A WORD FROM OUR SPONSOR

A $\text{♩} = 100-120$
double-tongued

2.5sec

B 5sec
muted

C 5sec
slap tongue

D 5sec

7 LOCAL HERO

10sec

Place lower jaw 2/3 the way down the reed toward the ligature

ord

molto vib.

ff slap tongue: violent!

p

mp

8 TODAY'S FORECAST

$\text{♩} = 60$

mf

mf

mf

pp

mf

no vibrato

9 IN OUR NEXT SEGMENT...

$\text{♩} = 72-100$

f

p < f

p < f

pp < mf

10 ANOTHER WORD FROM OUR SPONSOR

A 2.5sec

B 5sec
tongue; no pitch, air sound etc.

C 5sec
play, then gradually drop jaw to produce the multiphonic overtones

D 5sec
tooth on reed

pp

11 PLANE CRASH

TOTAL TERROR: Include Screams (vocal) & Physical Movement as well as Musical Representation

10sec.

12 MONEY MATTERS

A Plane Fares 5sec.

gliss pp ff

B Electronic Toys

♩ = 72-100

mf f p < f p < f p < f p < f ppp < f f > p f > p f > p f

C Stocks & Bonds

ugliest sound possible

4sec f p ff 3.5sec

13 STILL AHEAD.....

♩ = 60

mf

14 MORE WORDS FROM OUR SPONSOR

A

gliss gliss

f

2.5sec

10sec.

B&C

take off mouthpiece
blow through barrel
relaxed
simulate brass pedal tone

mp

put mouthpiece
back on clarinet

5sec

D

slow ----- accel. ----- fast

p

15 SPORTS!

$\text{♩} = 60-70$

The main score consists of eight staves of music. It begins with a treble clef and a key signature of one sharp (F#). The tempo is marked as quarter note = 60-70. The music is characterized by intricate rhythmic patterns, including sixteenth and thirty-second notes, and frequent use of slurs and ties. Dynamic markings such as *f*, *mp*, and *p* are used throughout. The score includes various articulation marks like accents and breath marks. The piece concludes with a final cadence and a fermata.

16 MORE TO COME...

Musical notation for exercise 16: a single note on a treble clef staff with a fermata and a piano (*p*) dynamic marking.

17 STILL MORE WORDS FROM OUR SPONSOR

A

Musical notation for exercise 17A: a treble clef staff with a 2.5-second duration box, dynamic markings from *ff* to *pp*, and a fermata.

B

Musical notation for exercise 17B: a treble clef staff with a 5-second duration box, a piano (*mp*) dynamic marking, and a diagram of a piano keyboard.

C

Musical notation for exercise 17C: a treble clef staff with a 2.5-second duration box, dynamic marking of *mf*, and a bass clef staff for singing in Bb.

18 LOCAL COLOR
♩ = 72-100

Musical notation for exercise 18: a treble clef staff with a 2/4 time signature, dynamic markings of *mf* and *f*, and various rhythmic patterns.

19 CLOSING
♩ = 100-110

Musical notation for exercise 19: a treble clef staff with a 4/4 time signature, dynamic markings of *mf*, *p*, *f*, and *p*, and a fermata.