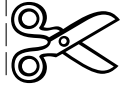




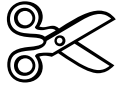
11"x17" Laser White (32lb) Paper
Black & White
Double-Sided

Cut 4" from TOP (17" to 13")



Cut 1" from LEFT (11" to 10")

File Date: 8/8/12



Andrea L. Reinkemeyer

WROUGHT IRON

for Flute and Percussion

(2012)

Troy Savings Hall ceiling composers: Bach, Handel, Haydn, Mozart, Beethoven, Chopin

Pieces referenced in *Wrought Iron*:
 Beethoven, *Fur Elise*
 Chopin, *Prelude No. 2 in A minor*

Other concepts explored:
 wrought = worked
 iron = Fe

NOTATION:

Flute:

Play grace notes before the beat

+ = keyclick with normally-produced tone

^t = timbre trill between the notated fingerings
 (fingerings from Robert Dick, *The Other Flute: A Performance Manual of Contemporary Techniques*, Second Ed.)



= Keyclick with closed mouth piece by the tongue. "By closing the mouthpiece with the tongue, it will be possible to play keyclicks which will sound below the lowest notes of the instrument. With a closed mouthpiece, the keyclicks sound a major seventh down." (from Mats Möller, *New Sounds for the Flute*, <http://www.sfz.se/flutetech/>)

Percussion:

Vibraphone	Vib.
Triangle	T
China Cymbal	C
Splash Cymbal	S
Tambourine	Tamb.
Bongos	Bon.

Mallet Suggestions:

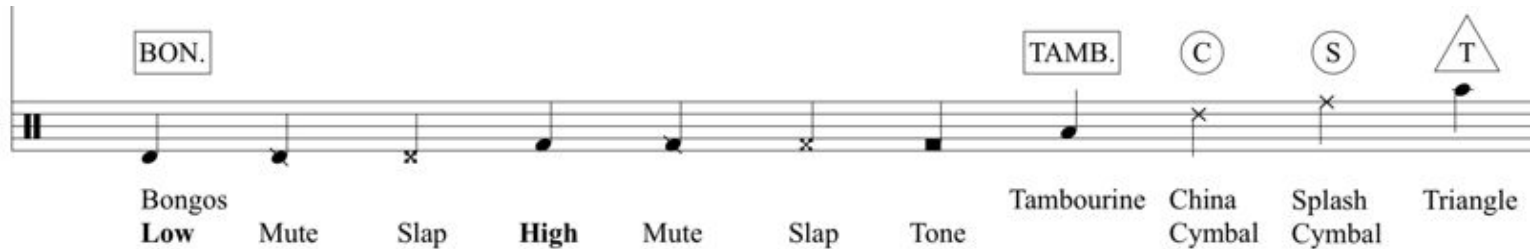
Please choose mallets that provide a warm, yet articulated sound

-mhy	Medium-hard Yarn
-mhy(sticks)	Mallet stick
-hands	Hands
-hands(t)	Hands on triangle striker
-t	Triangle beaters, Light
-ts	Suspended Triangle beaters/striker attached with rubber tubing
-scrape	Scrape with mallet stick or fingernails
∧	Fingernails



On vibraphone, + = dead stroke

Play grace notes before the beat



Score

WROUGHT IRON

for Flute and Percussion
Commissioned by the Albany (NY) Symphony Orchestra

Andrea L. Reinkemeyer
(b. 1976)

Churning ♩. = 96
(3+3+2+2)

Churning ♩. = 96
(3+3+2+2)
-mhy

p articulated, but warm
light, clean pedal

f

pp *f*

p *fp* *p*

bright, metallic

PEETHOVEN

© Copyright 2012 Andrea L. Reinkemeyer (BMI).
All rights reserved.