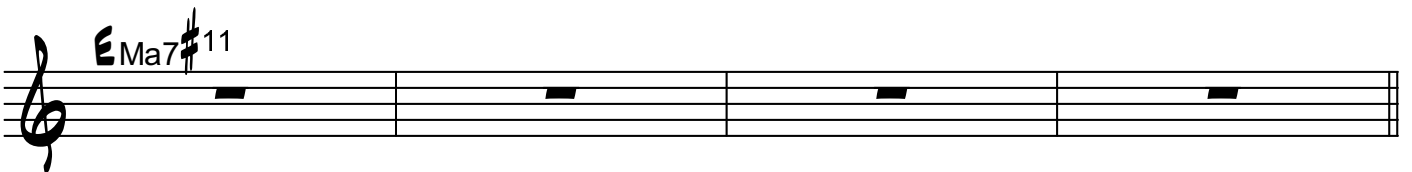
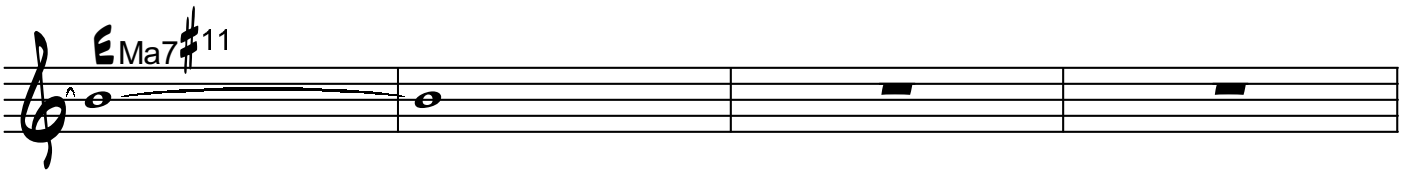
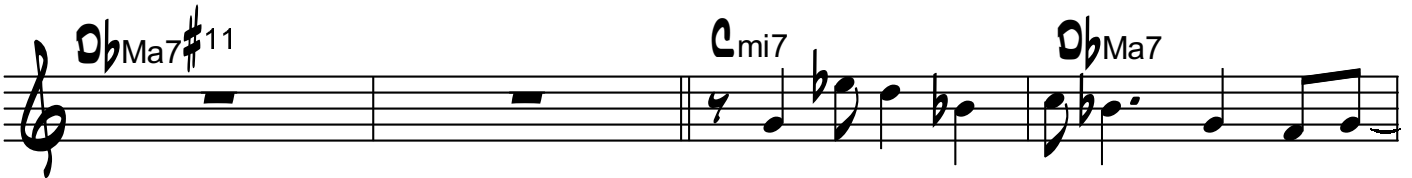


Samba Song

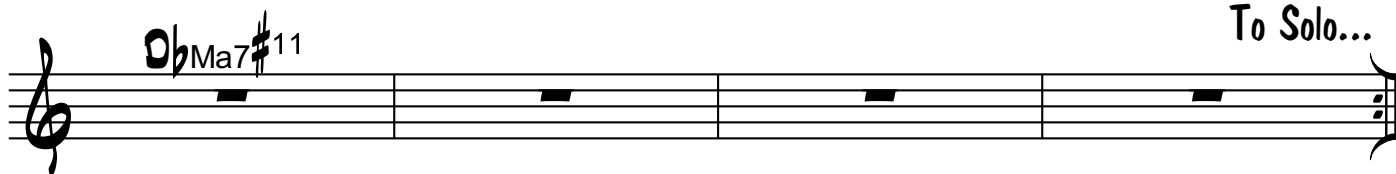
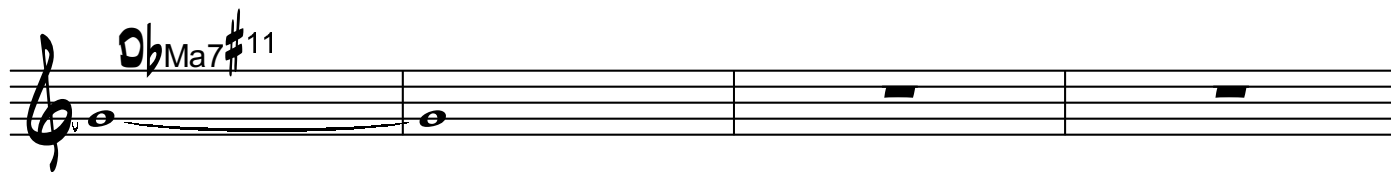
GEORGE F. SPICKA

Intro



2

The image shows a handwritten musical score consisting of ten staves of music, all in treble clef. The music is written in a style that appears to be a lead sheet or a study score. The first staff begins with a '2' above the staff, indicating a second ending. The notation includes various chords and melodic lines. The chords are labeled with letters and accidentals, such as C^{mi7}, D^bMa7, E^bMa7, C^{Ma7}, B^{Ma7}#¹¹, C^{mi11}, B^{Ma7}#¹¹, C^{mi11}, B^{Ma7}#¹¹, C^{mi11}, D^bMa7, E^bMa7, D^bMa7, C^{Ma9}, B^bMa9, A^bMa7#¹¹, D^bMa7#¹¹, D^{mi9}, C^{mi9}, and A^bMa7#¹¹. A circled letter 'B' is placed above the third staff. The notation includes notes, rests, and accidentals (sharps, flats, and naturals). The overall style is that of a personal or student manuscript.



TAG:

